

# BRUNTON

---

## RESIDENTIAL



**OSPREY WALK, GREAT PARK, NE13**

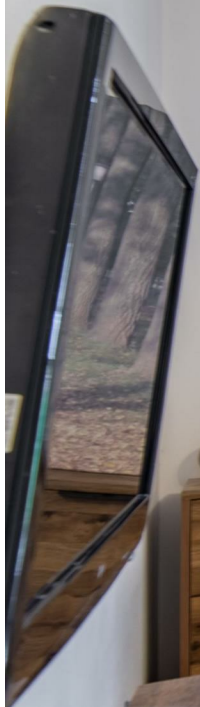
**£220,000**



# BRUNTON

---

## RESIDENTIAL







# BRUNTON

---

## RESIDENTIAL





# BRUNTON

---

## RESIDENTIAL



### THREE BEDROOM | SEMI-DETACHED | OPEN ASPECT TO FRONT

Brunton Residential are delighted to offer for sale this semi-detached family home located on the desirable Osprey Walk with stunning views to the front. This property boasts three well-proportioned bedrooms, spacious living areas, a rear garden, and off-street parking, providing ease and security for your vehicles.

For more information and to book your viewing please call our team on 0191 236 8347.



# BRUNTON

---

## RESIDENTIAL



# BRUNTON

---

## RESIDENTIAL

Upon entering, you are greeted by an inviting entrance hall with stairs leading to the first-floor landing. To the left, there is a stylish kitchen fitted with modern cabinetry and integrated appliances.

At the rear of the home, you'll find a generously sized lounge/diner spanning the width of the property, complete with soft carpeted flooring and double doors that lead out to the rear garden.

The first floor features three well-proportioned bedrooms. Two are comfortable doubles, while the third is ideal for use as a home office or nursery. A family bathroom serves all bedrooms, equipped with a bath, overhead shower, and wash basin.

Externally, the property boasts a private rear garden with a lawn and fenced boundaries. To the front, there is a small, low-maintenance lawned garden with shrubbery, alongside the added convenience of off-street parking.

### Tenure

The agent understands the property to be freehold. However, this should be confirmed with a licenced legal representative.

Council Tax Band C



# BRUNTON

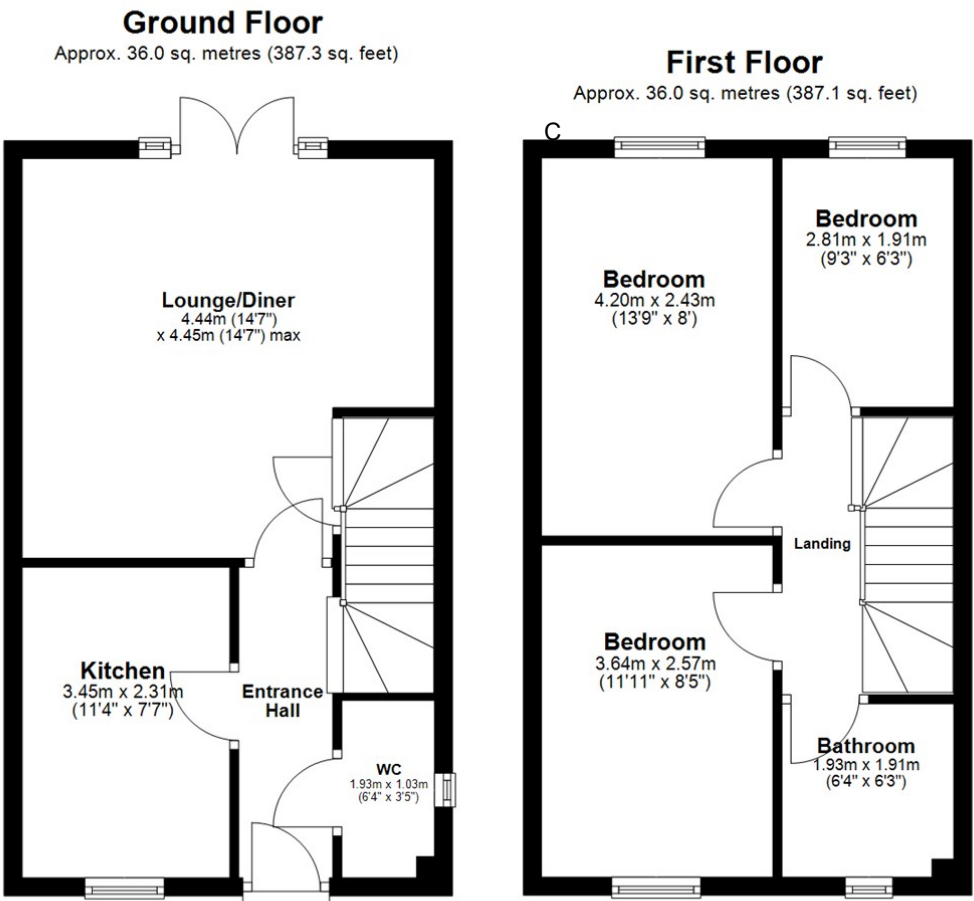
## RESIDENTIAL

TENURE : Freehold

LOCAL AUTHORITY :

COUNCIL TAX BAND : C

EPC RATING : B



All measurements are approximate and are for illustration only.  
Plan produced using PlanUp.

